

Les Conseillers **BCA** Consultants Inc.  
Valued Engineering Since 1985



Montreal - Toronto – Vancouver - Morocco

Copyright © 2017

All photographs contained in the following presentation are actual BCA projects.



# Les Conseillers BCA Consultants Inc.



2

- About BCA
- Clients
- Organization
- Projects

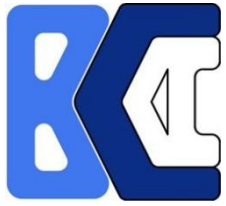


# About BCA

3



- BCA Consultants is a consulting engineering firm specializing in building structures.
- Founded in 1985.



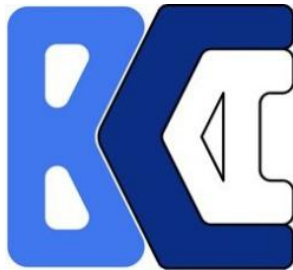
# About BCA



4

- Majority of staff in Montreal, approximately 30 employees total.

## Head office



### **Les Conseillers BCA Consultants Inc.**

Montreal, Qc, Canada

- Structural Engineering

## Sister companies



### **Groupe Conseil Genisecure**

- Safety assessments for building façades and parking structures



### **BCA Vancouver Inc.**

- Regional Office
- Affiliated with Tash Engineering



### **BCA Toronto Inc.**

- Regional Office



### **BCA Morocco Inc.**

- Regional Office
- Affiliated with Sam Structures





# About BCA



5



- Licensed in all Canadian provinces and territories:



The Association of Professional Engineers and Geoscientists of Alberta



Northwest Territories and Nunavut  
Association of Professional Engineers and Geoscientists



Association of Professional Engineers of Yukon



# About BCA



6

- Member:

- National Research Council of Canada (NRC)
- CSA Group (Canadian Standards Association)
- Canadian Society of Civil Engineering (CSCE)
- Canadian Institute of Steel Construction (CISC)
- Canadian Geotechnical Society (CGS)
- Canadian Wood Council (CWC)
- Cement Association of Canada (CAC)
- American Concrete Institute (ACI)
- ASP Construction (*Association paritaire CSST*)
- International Concrete Restoration Institute (ICRI)

 National Research Council Canada  
Conseil national de recherches Canada



Canada



CSA Group  
Groupe CSA

cisc icca  
CANADIAN INSTITUTE OF STEEL CONSTRUCTION  
INSTITUT CANADIEN DE LA CONSTRUCTION EN ACIER



American Concrete Institute®  
Advancing concrete knowledge



INTERNATIONAL  
CONCRETE REPAIR  
INSTITUTE



Cement  
Association  
of Canada  
Association  
Canadienne  
du Ciment

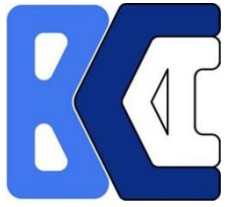


# About BCA



- BCA is proud to be involved in sustainable construction:
  - LEED (Leadership in Environmental and Energy Design) projects
  - Novoclimat





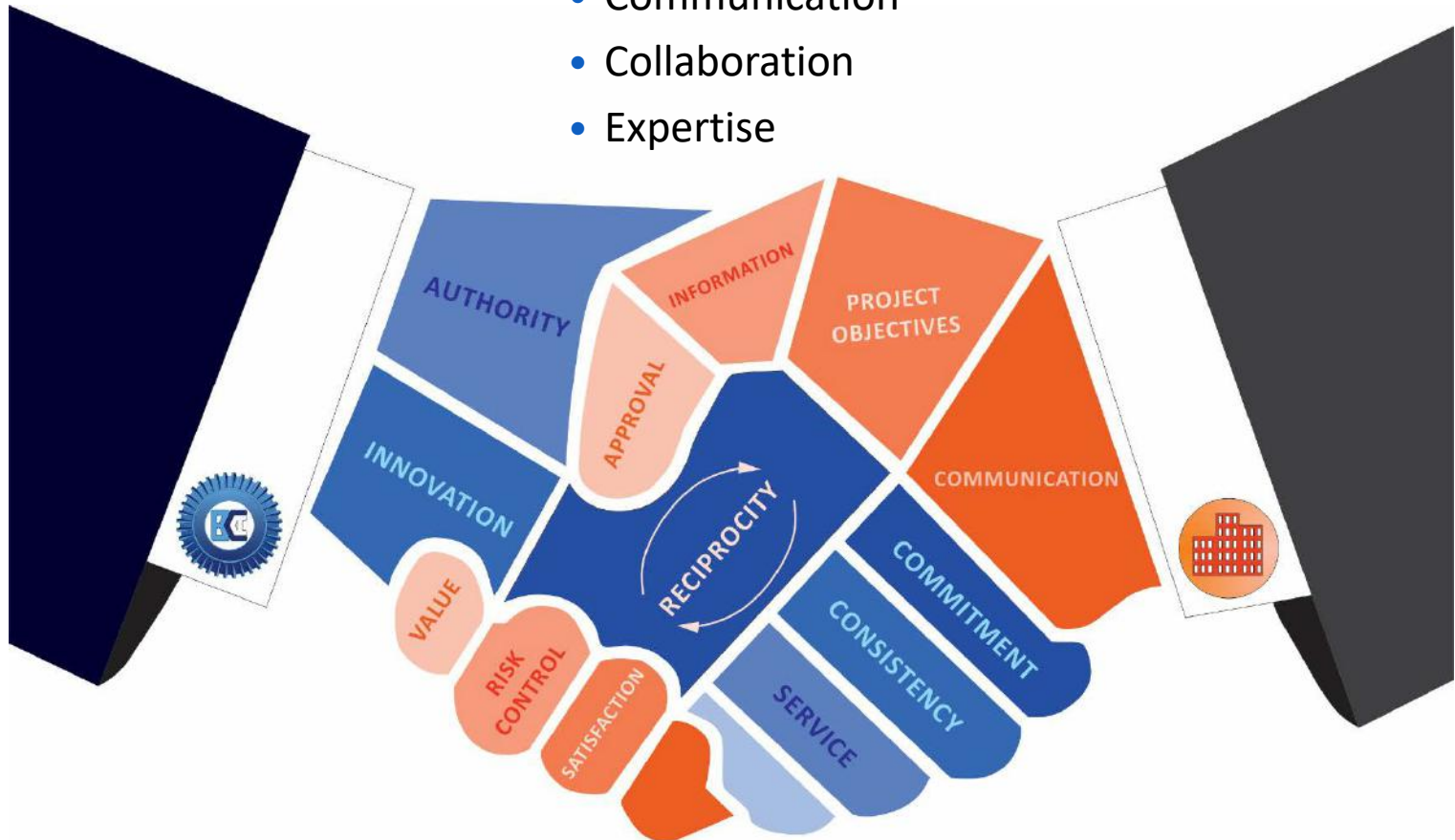
# About BCA



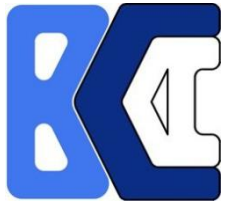
8

- What is BCA's approach?

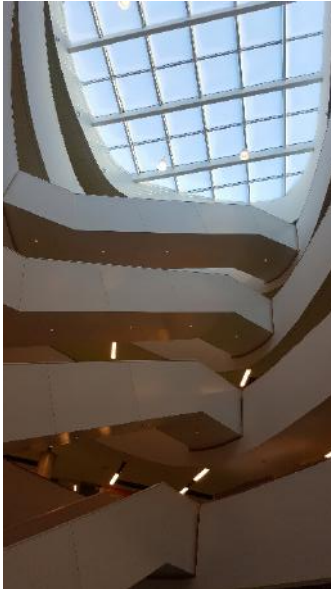
- Communication
- Collaboration
- Expertise







# About BCA



- BCA has developed a reputation for priority service and value engineering, founded on the use of appropriate materials, efficient systems and construction experience.
  - In consequence, many of BCA's projects are fast-track, design-build construction.



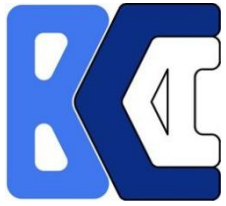
# About BCA



10

- Efficient project coordination through simple client communication structure



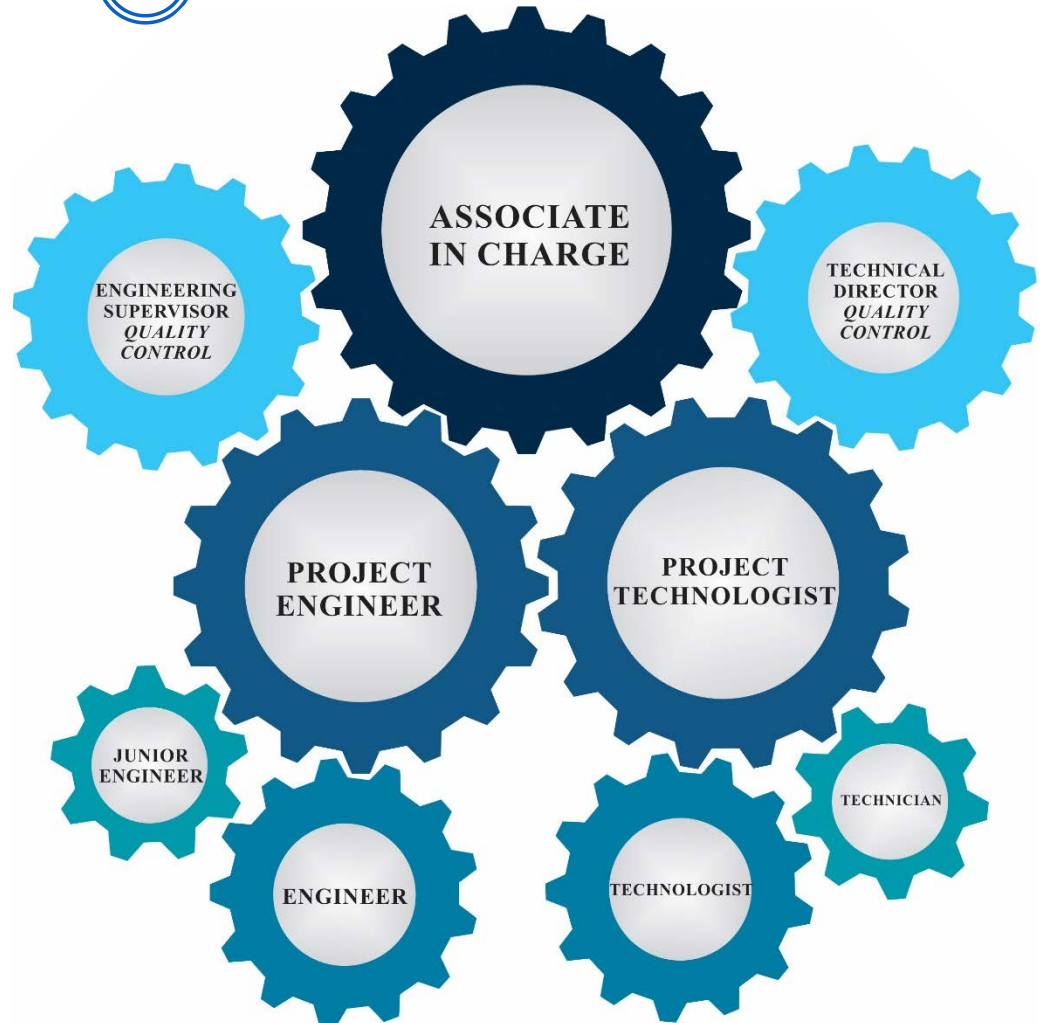


# About BCA



11

- Collaborative project management organizational structure

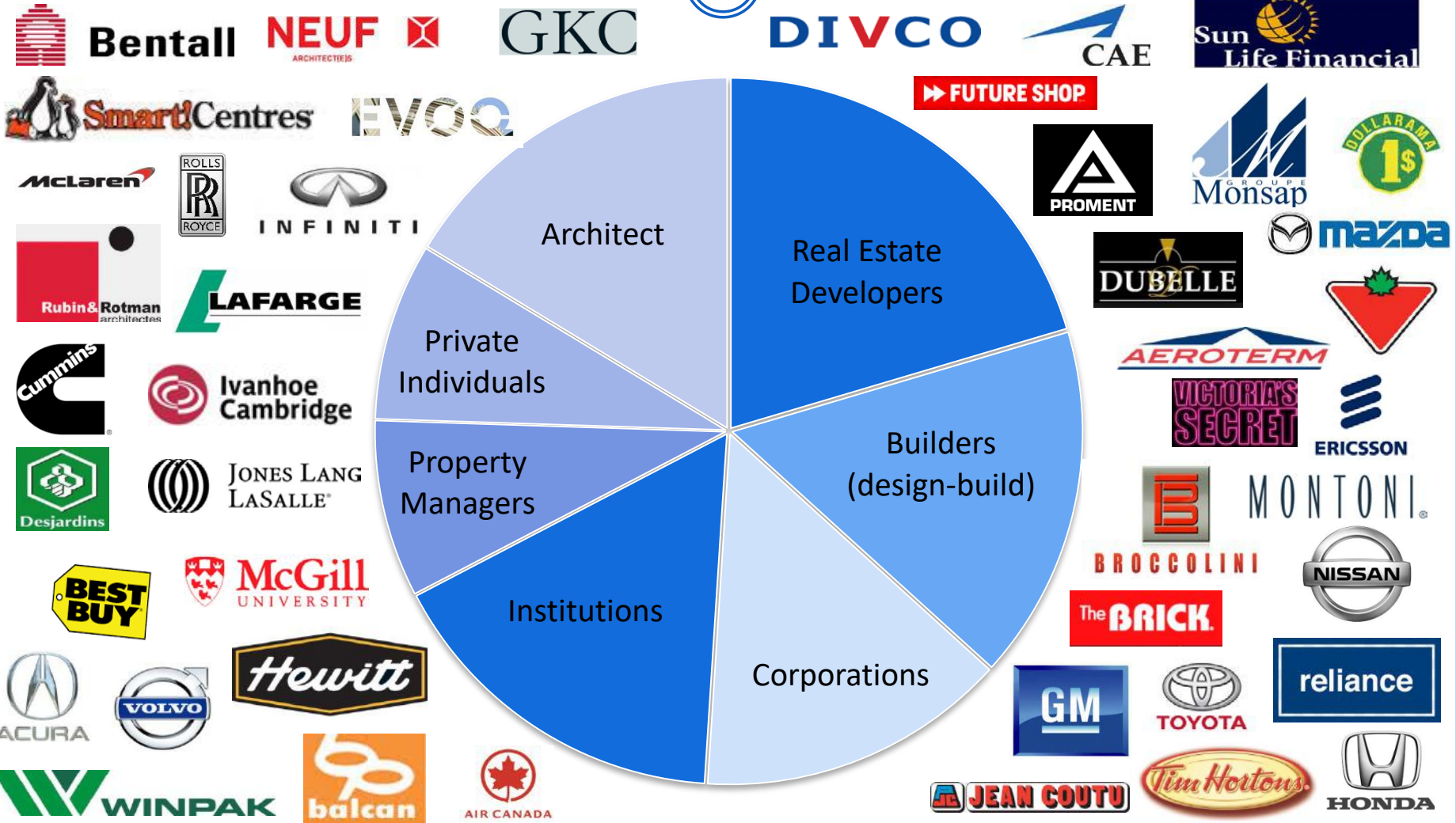




# BCA Clients



12





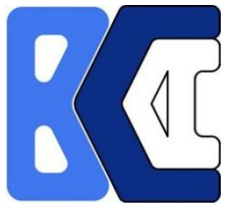
# BCA Clients



13

- BCA is proud of its strong, long-term relationships.



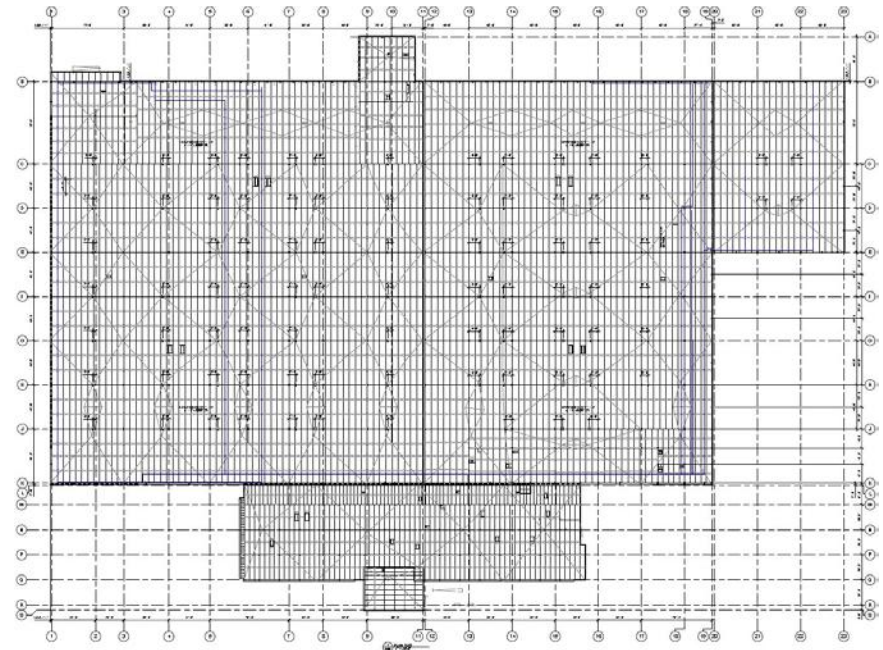
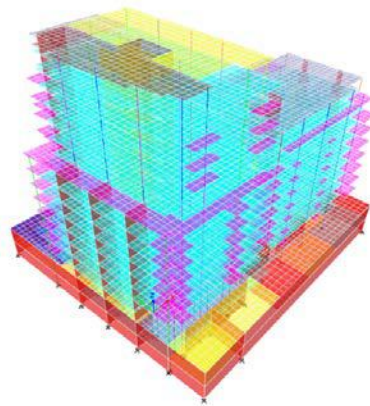


# Organization

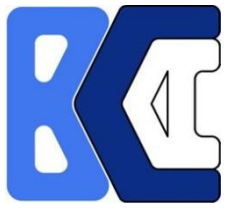


14

- Dedicated, specialized staff
  - 1) Engineering department
  - 2) Technical/ BIM department
  - 3) Research and development department





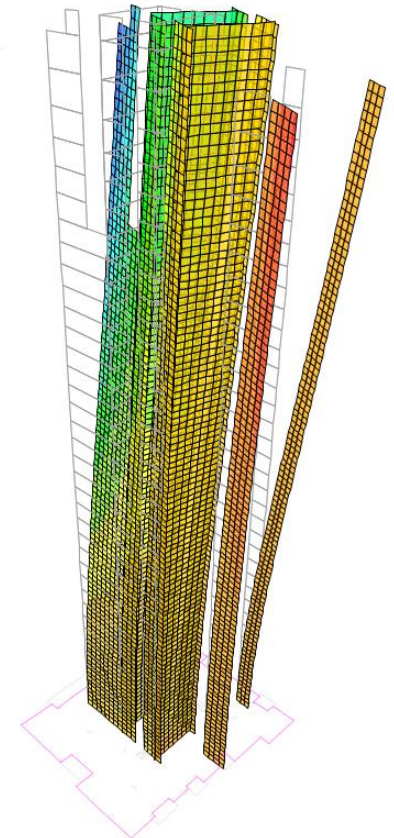
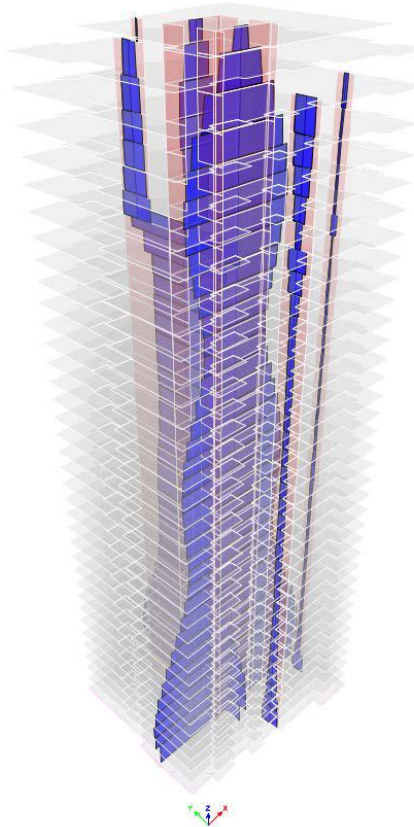
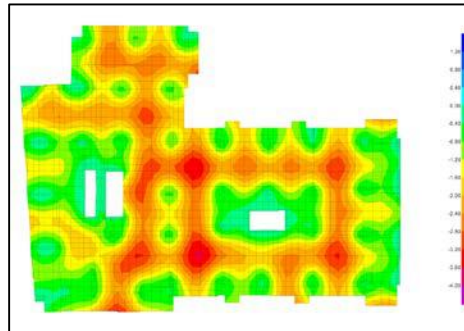
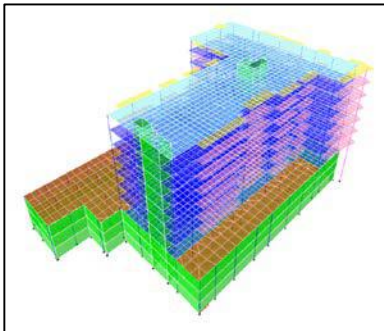
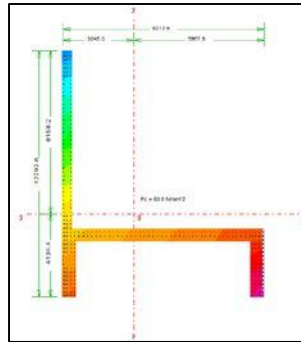
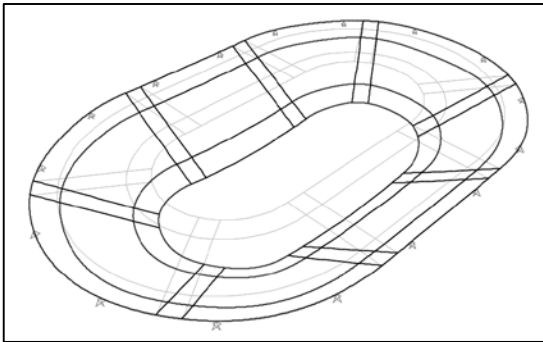


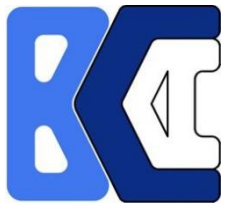
# Engineering Department



15

- Advanced modelling and computations with sophisticated design software
  - Reinforced concrete slabs (SAFE), Frame analysis (SAP2000), Column and wall sections (CSiCol), Gravity and lateral force resisting systems (ETABS)
- Extensive Professional Development Program
  - Conferences, Seminars, Literature Review



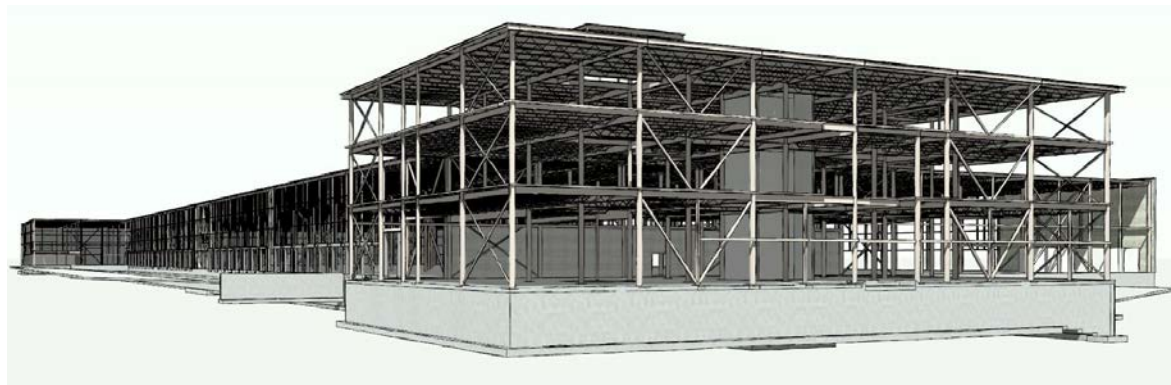
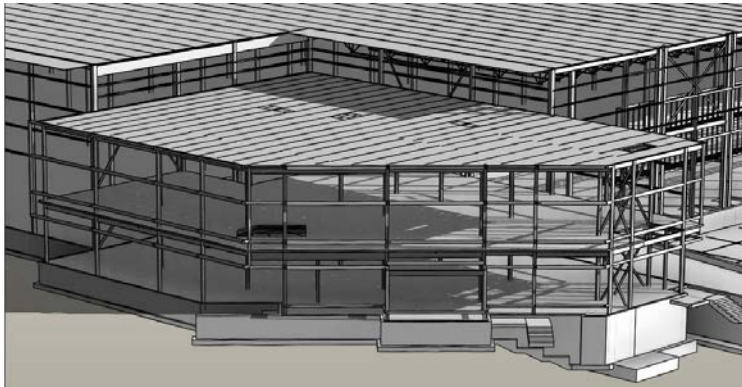
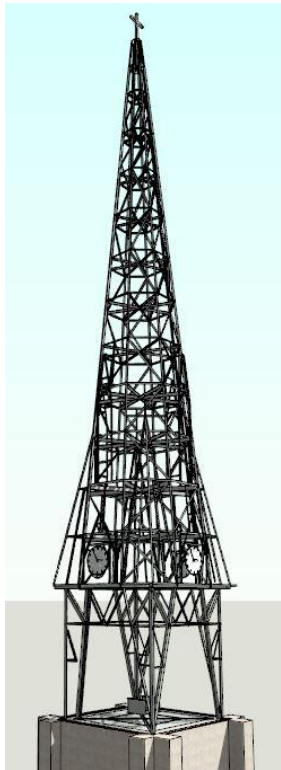


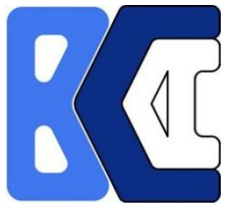
# Technical and BIM Department



16

- Building Information Modeling (Revit)
  - Active member of BIM QC
- Computer-Aided Drafting (CAD)





# Research and Development

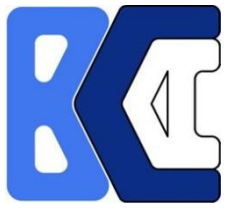


17

- Created in 2015
- Supports the ongoing development of the BIM and engineering departments





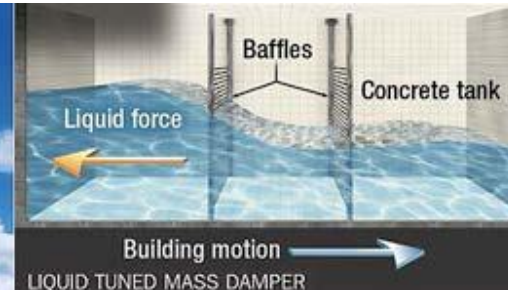
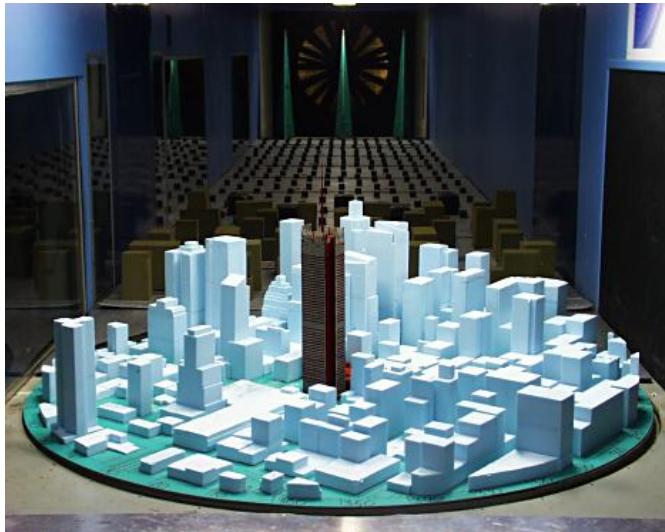


# Research and Development

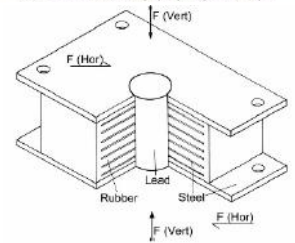
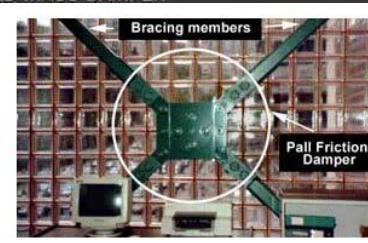
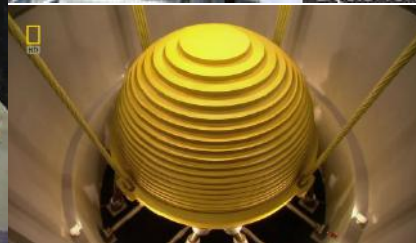


18

- Researches and evaluates new developments in the structural engineering field
  - New software, methods, systems
- Evaluates different options for complicated or unusual conditions
- Interfaces with university researchers and code developers
- Evaluates and optimizes standard practices



Seismic fluid viscous damper, 50,000 pounds output



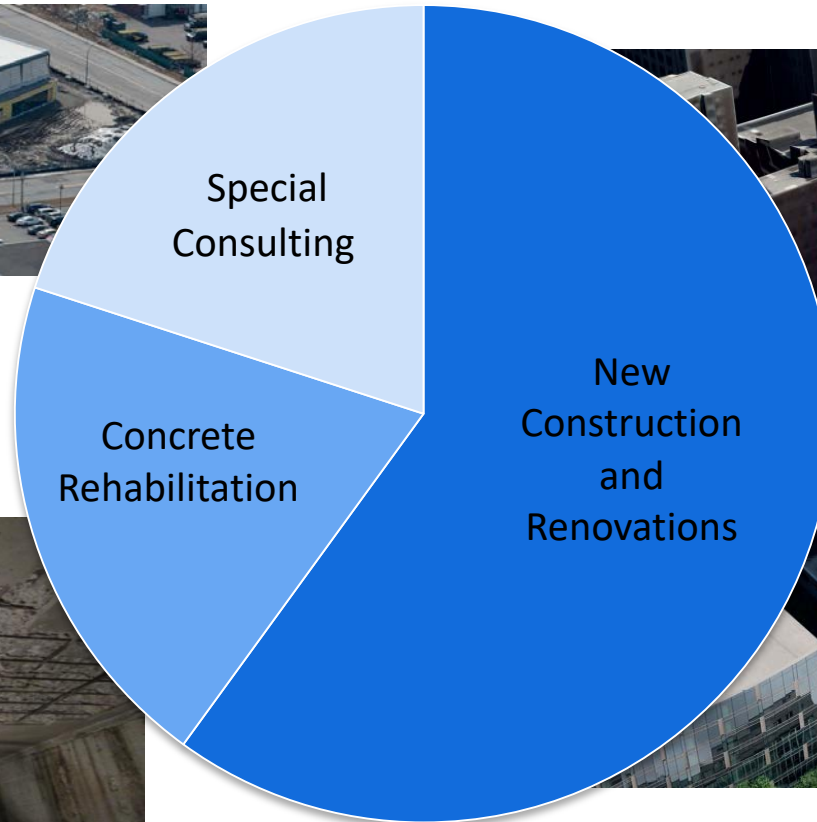


# BCA Projects

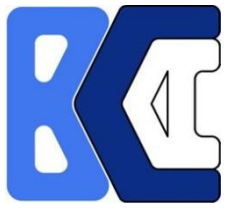


19

- Expertise categories:



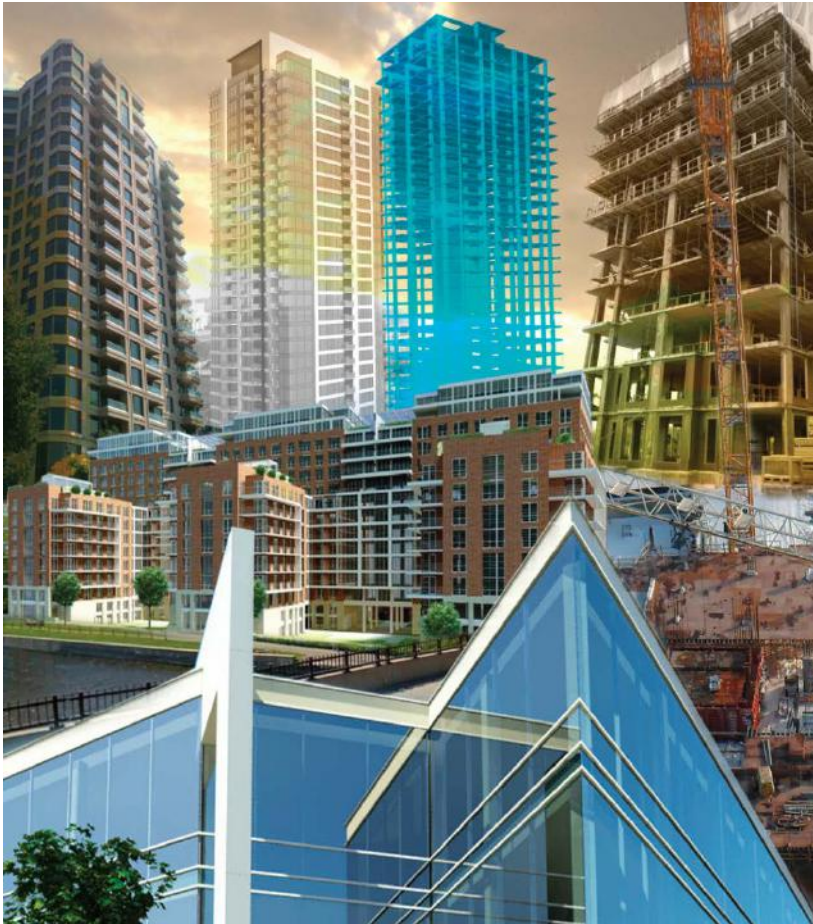




# New Construction and Renovations

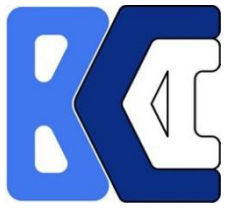


20



- Corporate Complexes
- Residential Multi-Storey
- Industrial Buildings
- Residential Buildings
- Renovation – Expansion
- Seismic Upgrading
- Commercial Retail
- Institutional Buildings
- Office
- Single-Family Homes
- Special Structures



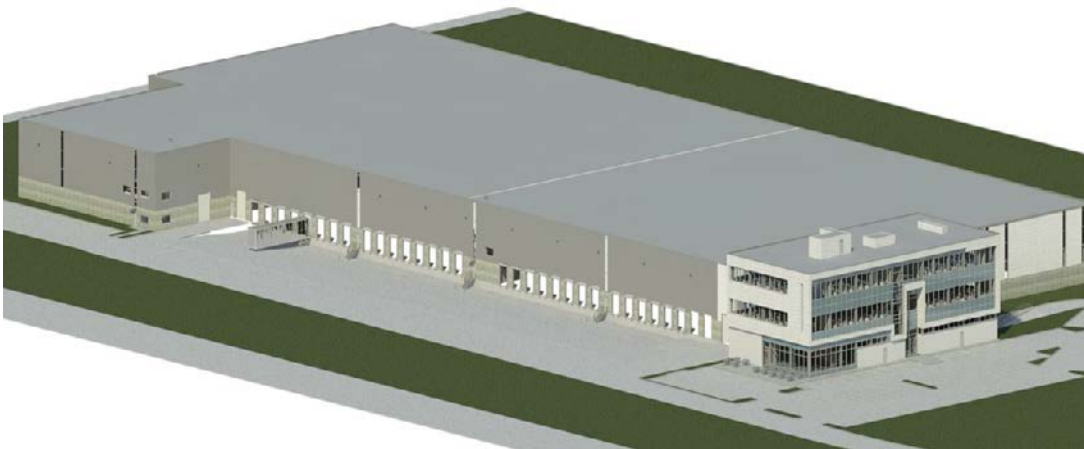


# New Construction and Renovations

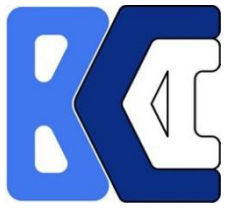


21

- Corporate Complexes







# New Construction and Renovations

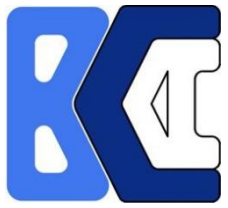


22

- Residential Multi-Storey







# New Construction and Renovations

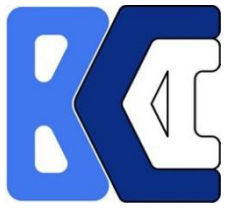


23

- Industrial Buildings







# New Construction and Renovations

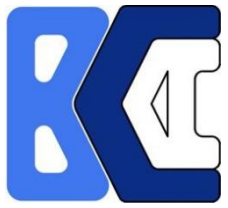


24

- Residential Buildings







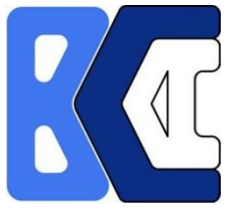
# New Construction and Renovations



25

- Renovation – Expansion



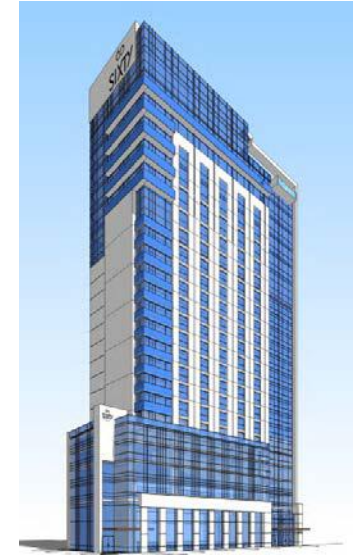
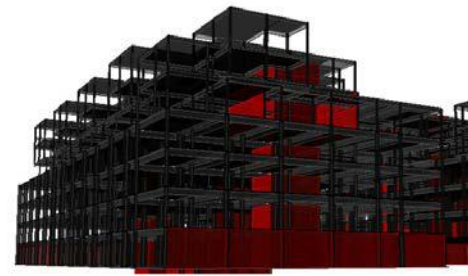
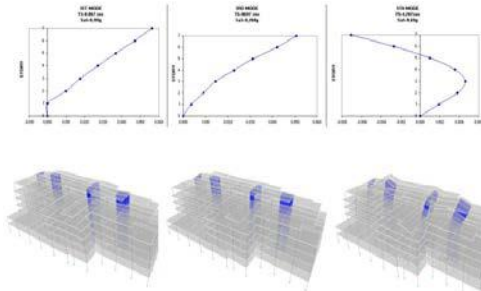
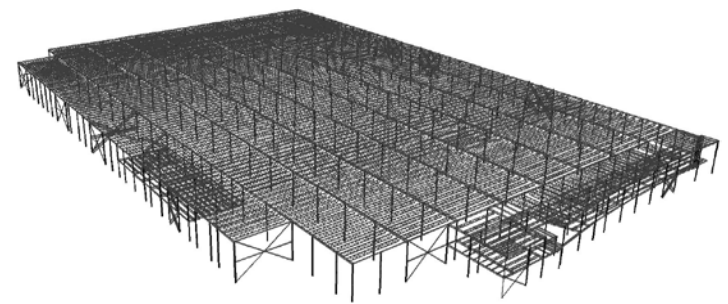


# New Construction and Renovations

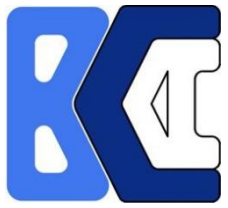


26

- Seismic Upgrading







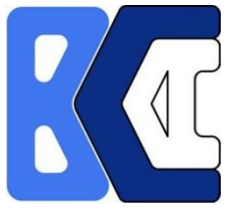
# New Construction and Renovations



27

- Commercial Retail





# New Construction and Renovations

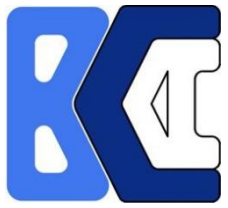


28

- Institutional Buildings





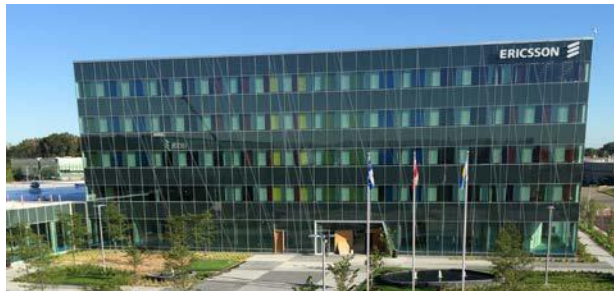
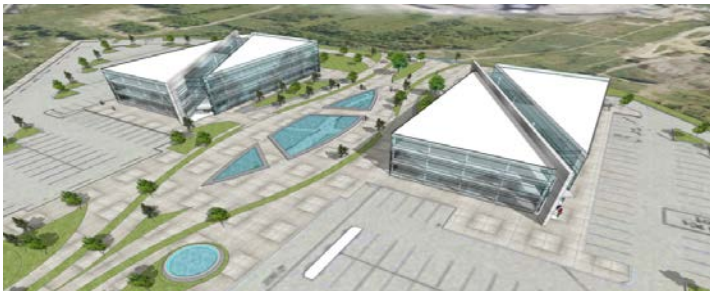


# New Construction and Renovations

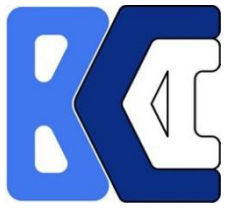


29

- Office







# New Construction and Renovations

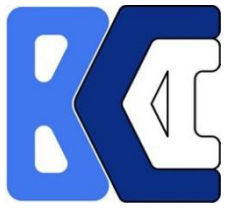


30

- Single-Family Homes







# New Construction and Renovations



31

- Special Structures

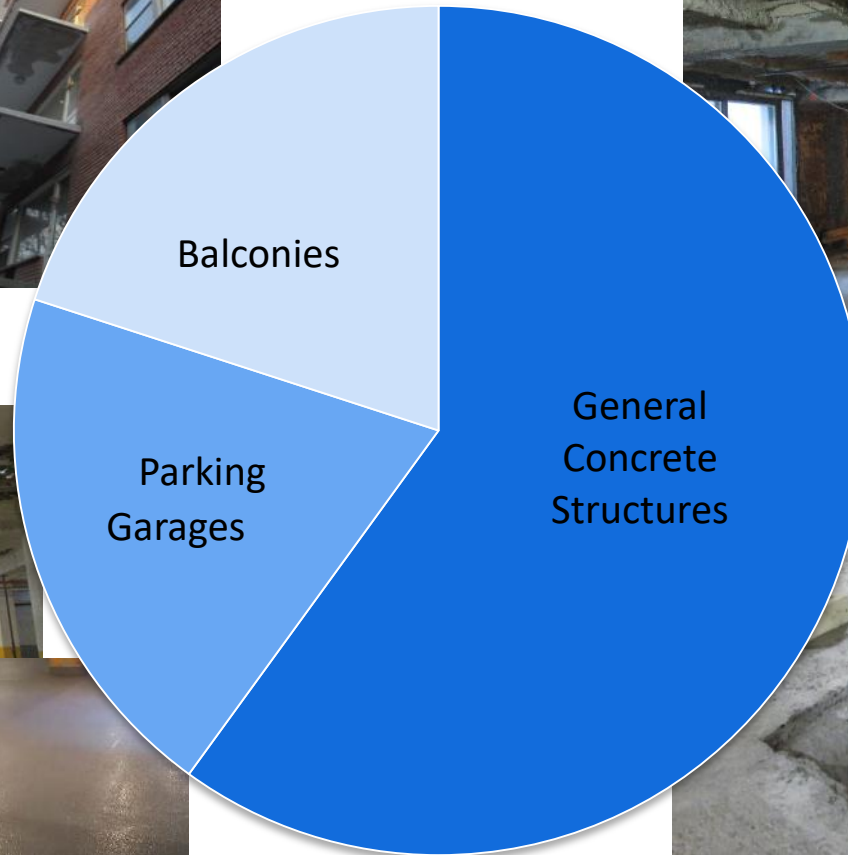




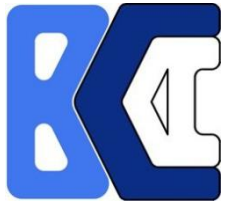
# Concrete Rehabilitation



32







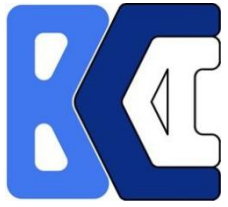
# Concrete Rehabilitation



33

- Parking Garages





# Concrete Rehabilitation



34

- Balconies







# Concrete Rehabilitation



35

- General Concrete Structures

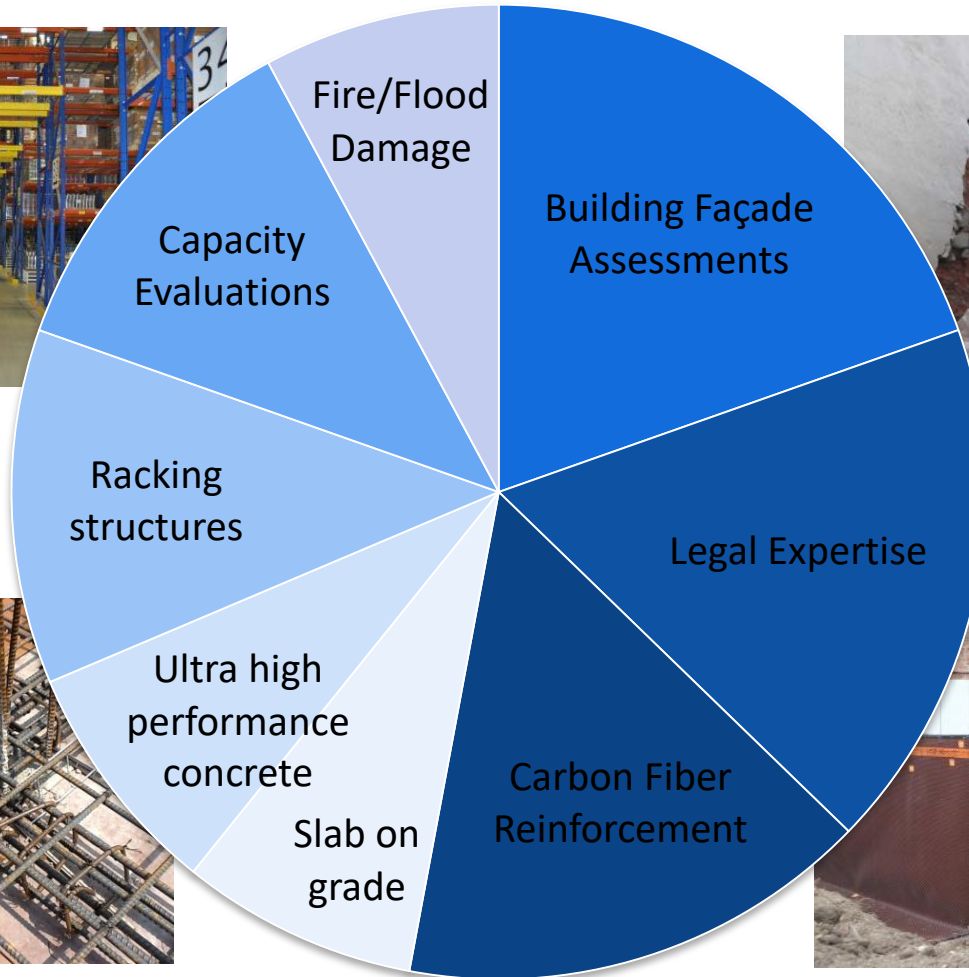
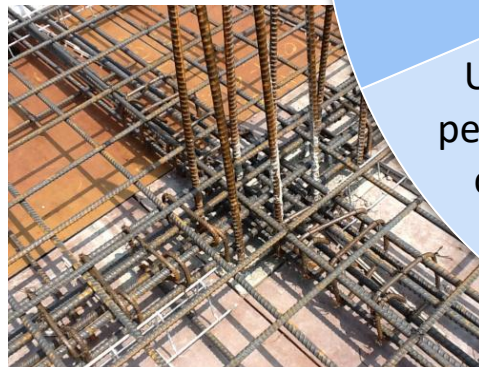




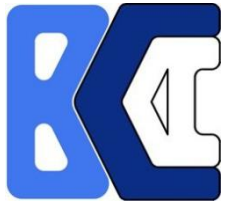
# Special Consulting



36







# Special Consulting



37

- Legal Expertise



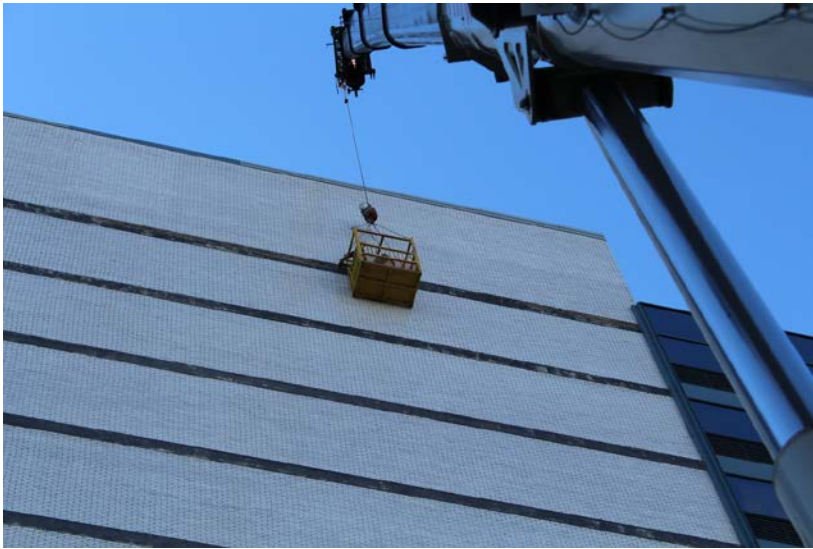


# Special Consulting

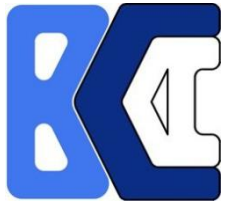


38

- Building Façade Assessments







# Special Consulting



39

- Fire/Flood Damage





# Special Consulting

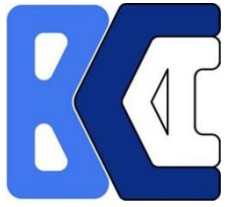


40

- Capacity Evaluations





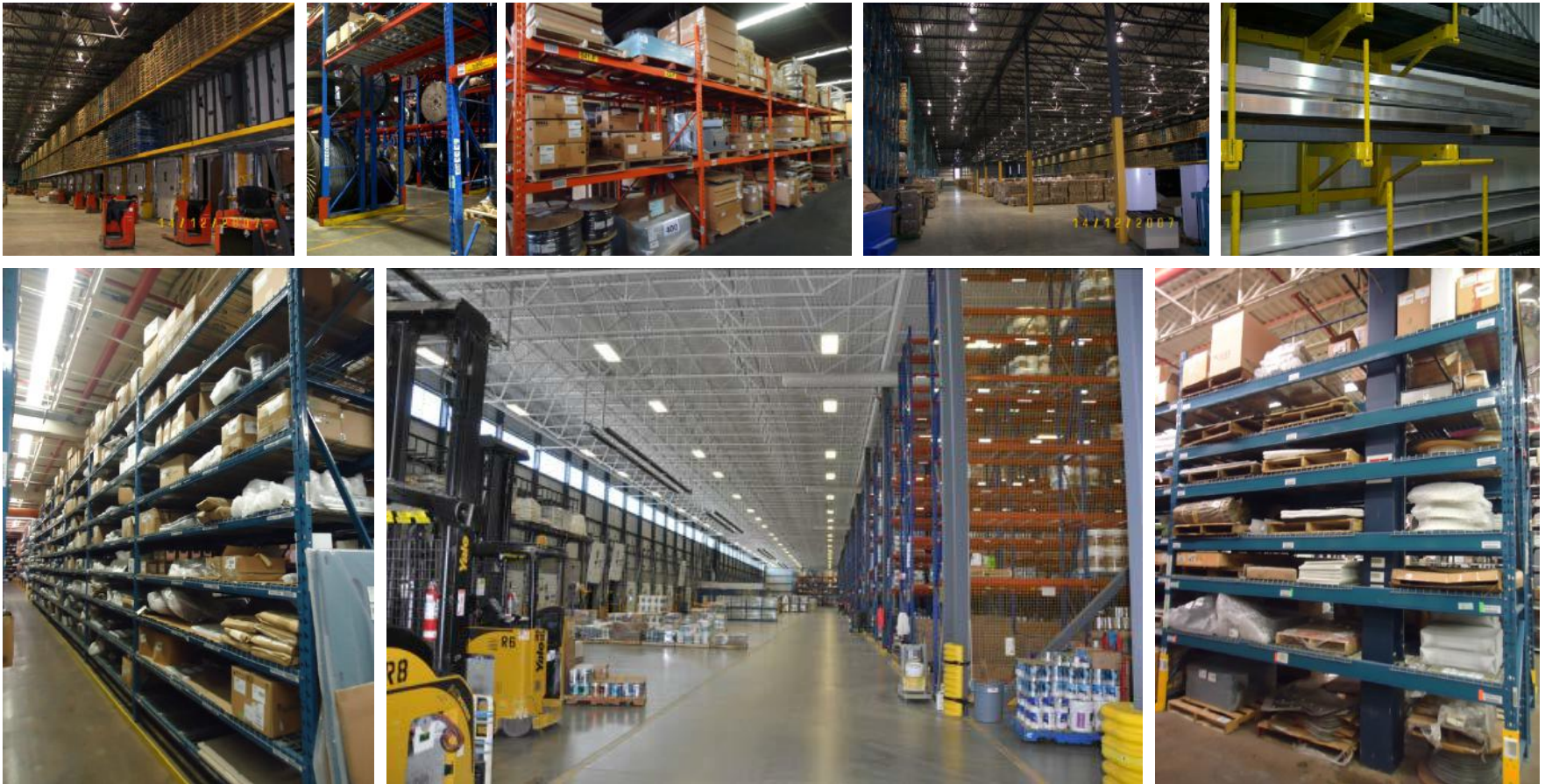


# Special Consulting

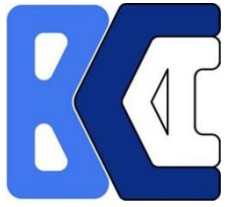


41

- Racking Structures







# Special Consulting

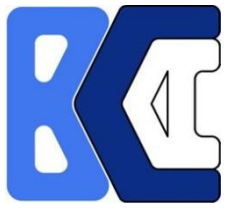


42

- Slab on grade





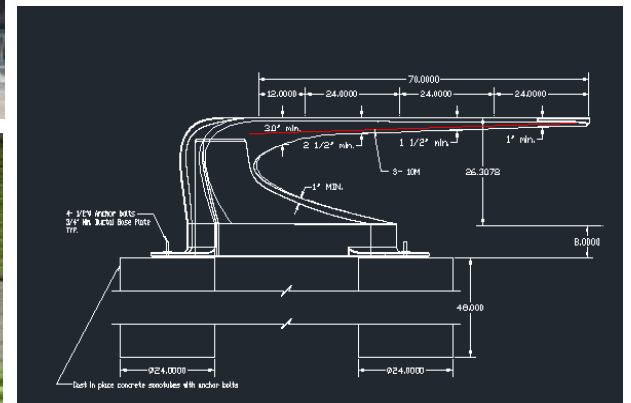
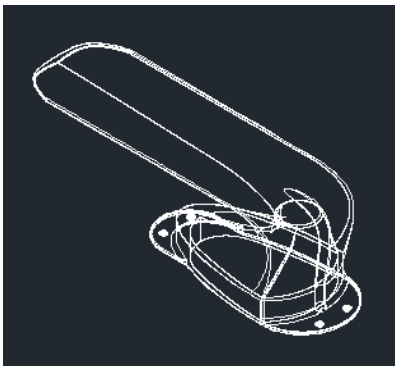


# Special Consulting

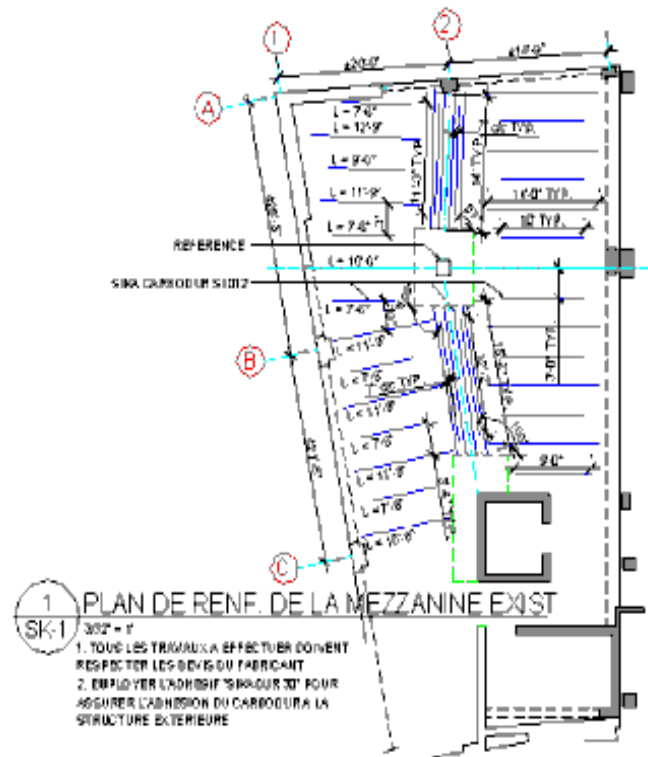


43

- Ultra High Performance Concrete



- Carbon Fiber Reinforcement







**EXPERTS-CONSEILS ESTIMÉS DEPUIS 1985**  
VALUED ENGINEERING SINCE 1985

BÂTIR  
CONCEVOIR  
ATTEINDRE



BUILD  
CONCEIVE  
ACHIEVE

***“WE LOOK FORWARD TO WORKING WITH YOU!”***

VISIT OUR LINKEDIN PAGE: [www.linkedin.com/company/10535508](http://www.linkedin.com/company/10535508)